

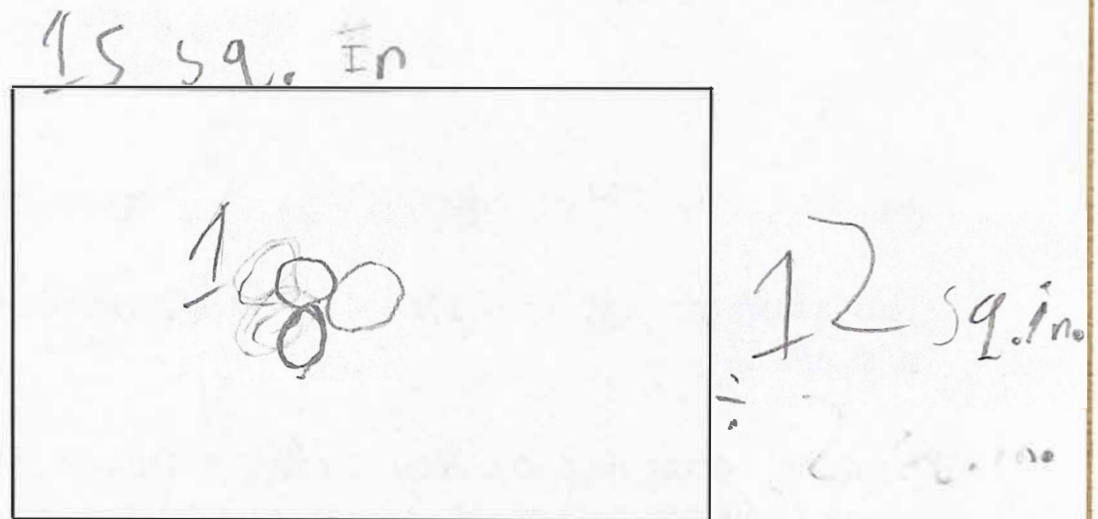
Date

4-20-22

School-Event Poster Recording Sheet

Directions:

1. Using your ruler, measure your rectangular piece of poster paper to find the area of the entire sheet of paper. Label the rectangle below to show what you measured.



2. In the space below, show how you found your answer. Write your answer on the line. You may use a calculator to find your answer if the numbers are large.

I measured with my ruler and put twelve times fifteen which got me 180.

My poster paper is 180 square inches

3. Using the rectangle above or your piece of poster paper, or both, find the area of HALF of your poster paper. Label the new measurements of ONE HALF of the rectangle above as well as on your practice poster page.

In the space below, show how you found your answer. Write your answer on the line.

I remembered $90 + 90 =$

180.

The area of HALF of my poster is 90 square inches.

This is how much space the MAIN INFORMATION of your poster will take up.

4. Using the rectangle above, your practice poster, or both, find the area of ONE FOURTH of your poster. Label the new measurements of ONE FOURTH of the rectangle above as well as on your practice poster page.

In the space below, show how you found your answer. Write your answer on the line.

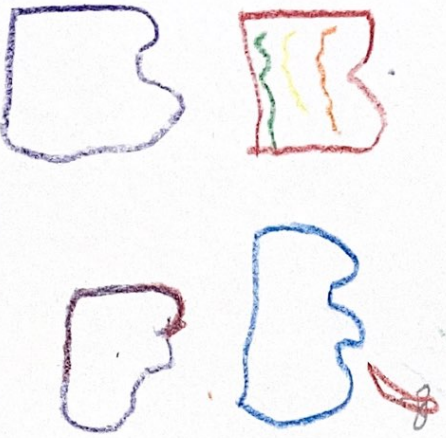
I divided $180 \div 4 = 45$

The area of one fourth of my poster is 45 square inches.

This is how much space that each the DETAILS and GRAPHICS of your poster will take up.

Shop
with
parents
every
Wednesday

BOOKS
FOR
PARENTS
+ MORE



Place: Silvester
Elementar y Schaal
Price Range: 1-25€
Date: May 2 - May
7 during encore